

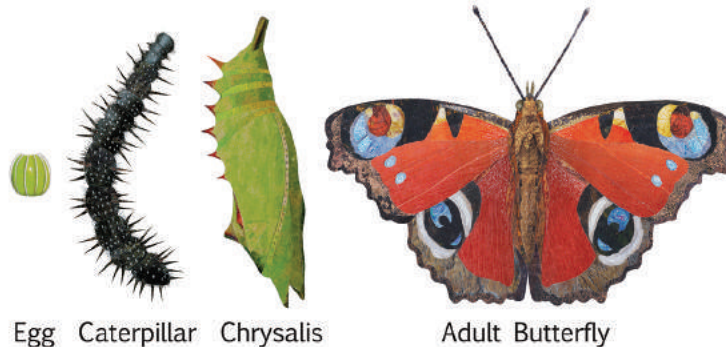
Amazing Transformations by Metamorphosis

Insects totally transform the way they look a number of times during their lifetime. Take a look at some extraordinary insects and the amazing changes they go through.

Complete Metamorphosis

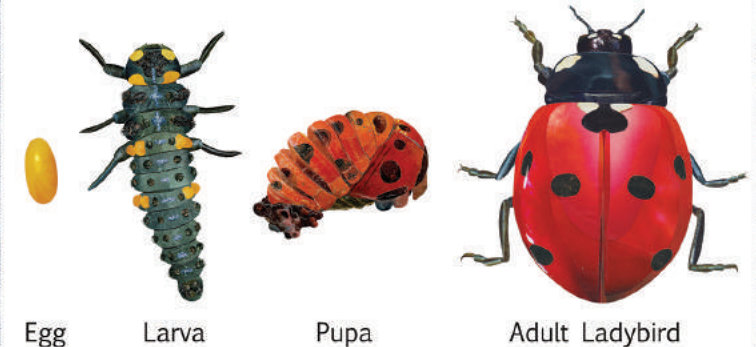
Many insects including beetles, flies, ants, moths, fleas and butterflies go through 4 massive changes of appearance during their lifetime.

The 3rd stage appears inactive, but inside its outer shell the insect is changing from larvae to adult.



Egg Caterpillar Chrysalis Adult Butterfly

Peacock Butterfly Lifecycle

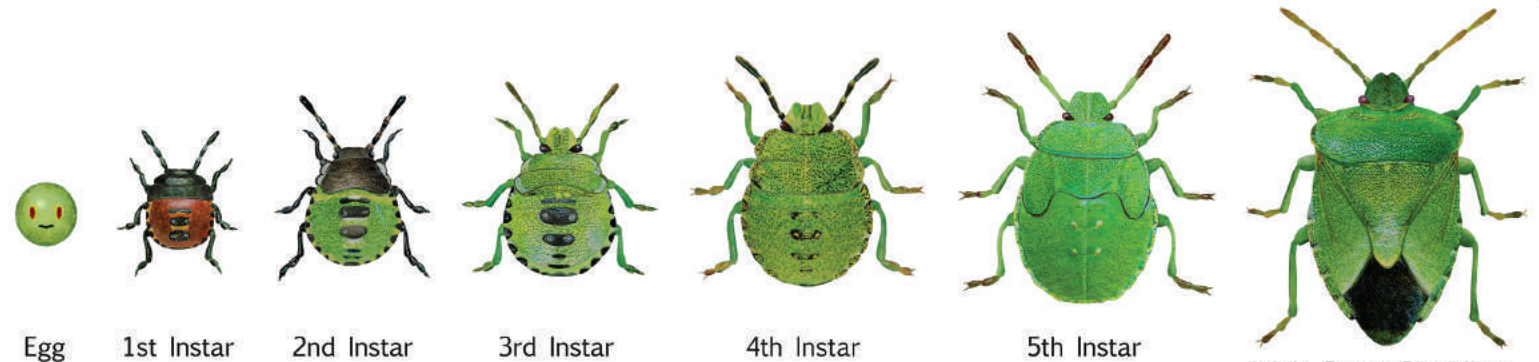


Egg Larva Pupa Adult Ladybird

7-spot Ladybird Lifecycle

Incomplete Metamorphosis

Some insects including bugs, lice, grasshoppers and crickets change appearance many times before adulthood. An insect's hard shell doesn't grow, so when it gets too tight, it splits and sheds to reveal a fresh, larger skin underneath. Each change is called an instar and can look radically different.



Egg 1st Instar 2nd Instar 3rd Instar 4th Instar 5th Instar

Adult Green Shieldbug (In Summer)

Green Shieldbug Lifecycle

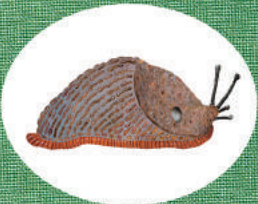
Mini-beast Guide

How many of these cool creatures can you spot?

0 Legs



Snail



Slug



Worm

6 Legs
Insects



Ant



Bug



Wasp



Beetle



Fly



Bee



Earwig



Cricket/Grasshopper



Moth



Dragonfly



Damselfly



Butterfly

8 Legs
Arachnids



Spider



Harvestman



Tick



Mite

14 Legs



Woodlouse



Pill Woodlouse

more than
14 Legs



Centipede



Millipede

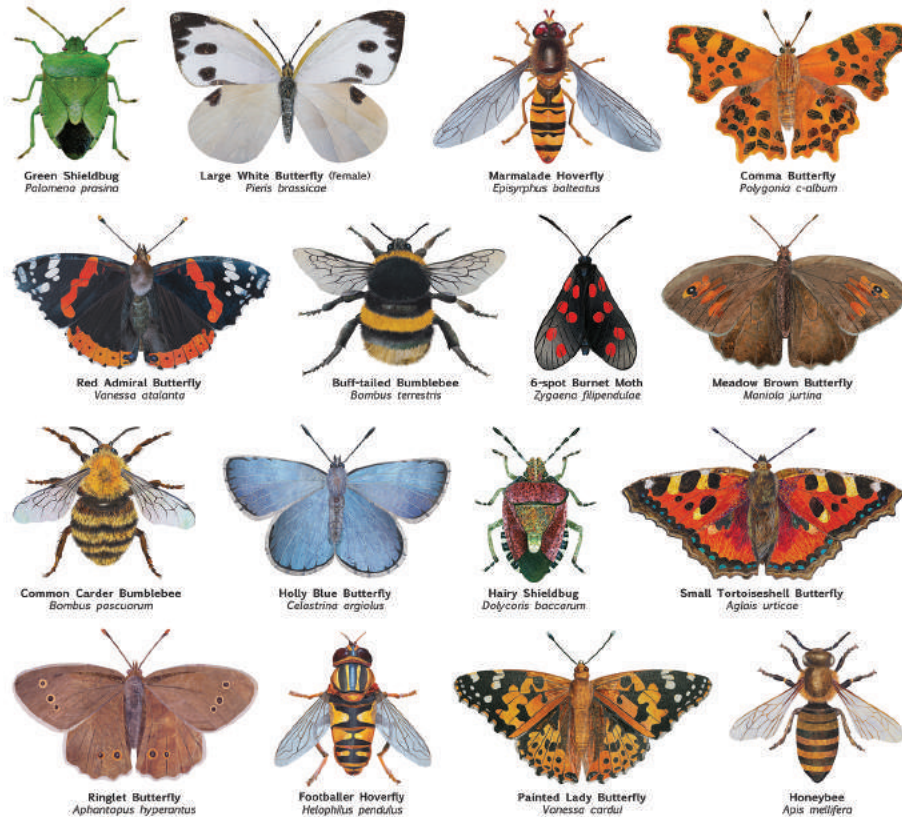
Look how many different species of mini-beast are found in Britain!

Snails: approx. 120
Slugs: 46
Worms: 27
Ants: 61
Bugs: approx. 2000
Wasps: over 7000
Beetles: over 4200
Flies: approx. 7000
Bees: approx. 270
Earwigs: 7
Moths: over 2500
Butterflies: 59

Damselflies: 21
Dragonflies: 36
Crickets: 23
Grasshoppers: 11
Spiders: approx. 650
Harvestmen: approx. 25
Ticks: 20
Mites: approx. 300
Woodlice: 65
Centipedes: 61
Millipedes: 83

BRAMBLES

The blackberry fruits of the bramble bush are loved by humans but also relished by many wild creatures. This plant's prickly stems give valuable protection for nesting birds and its flowers are food for many insects.

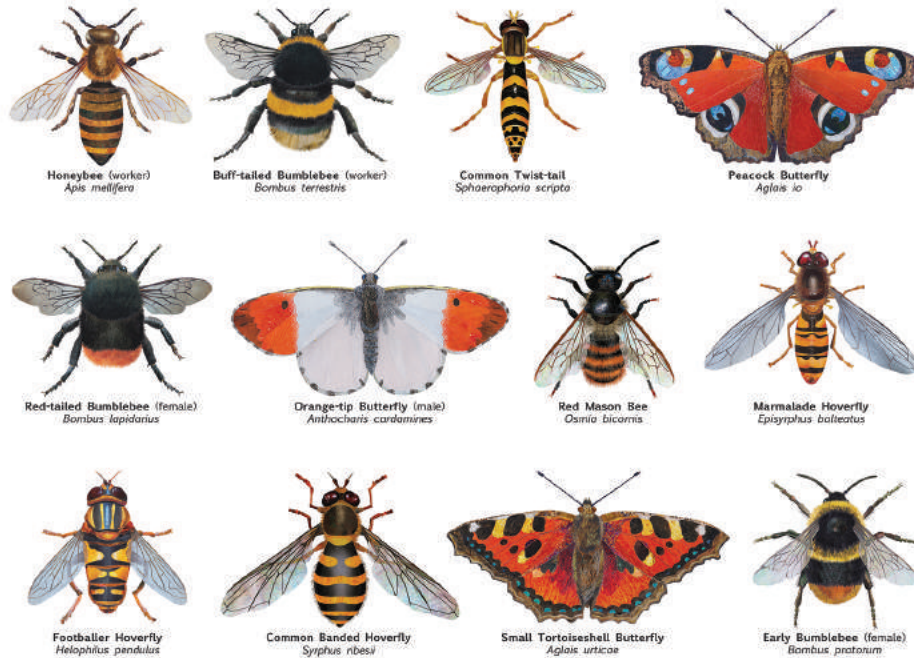


Next time you pass a bramble bush in flower, take a moment to notice how many insects are busily buzzing around it.



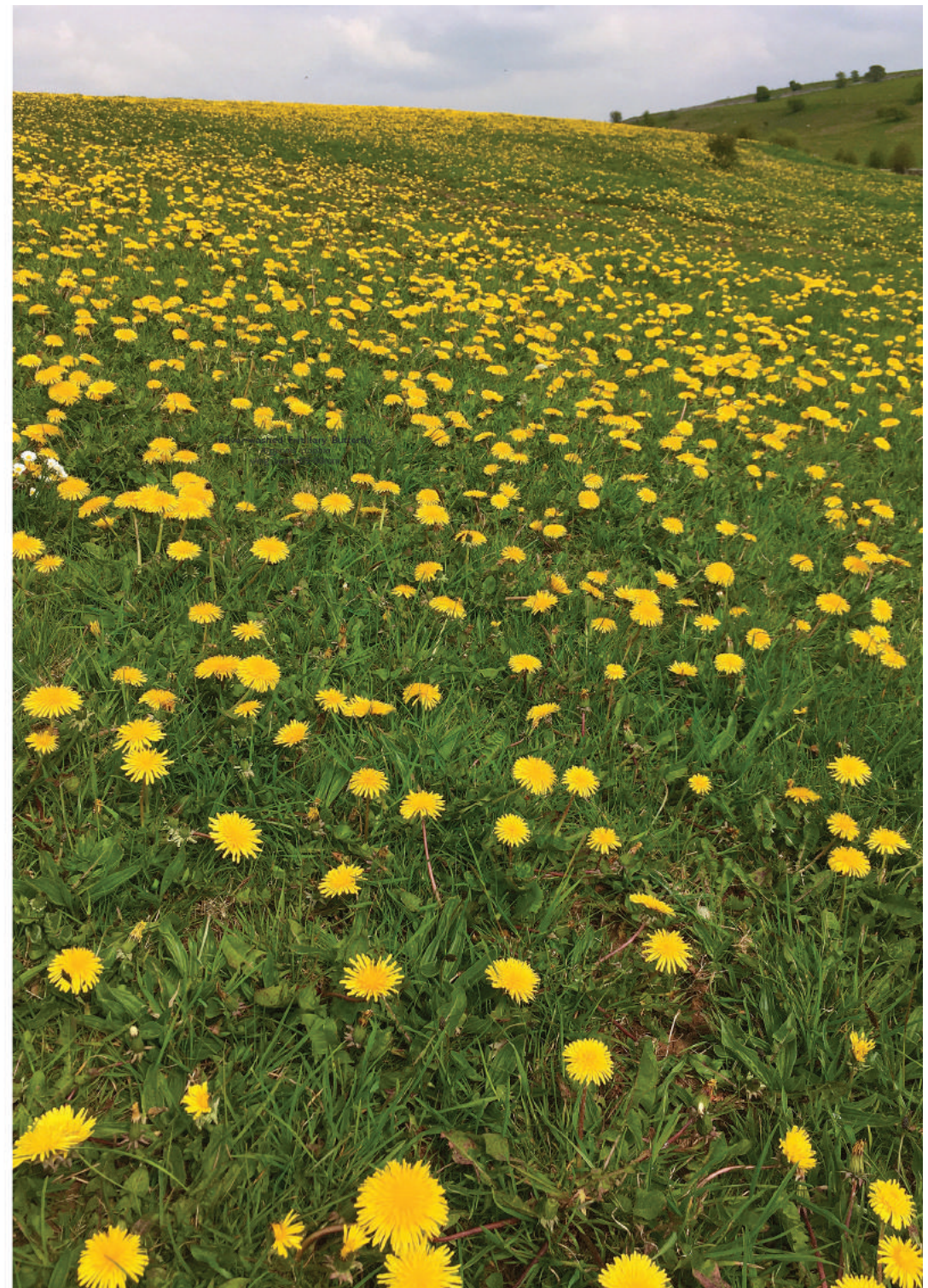
DANDELIONS

The nectar and pollen of these cheerful native wildflowers are a vital food in early Spring for many insects.



Dandelions help to fertilise top-soil. Their deep roots bring nutrients to the surface, which helps shallow-rooted plants to thrive.

Dandelion leaves are delicious when added to salads and are stuffed full of iron, calcium and potassium. They contain more vitamin C than a tomato and more vitamin A than spinach.



IVY

We are used to seeing ivy climbing up old walls, tree trunks and carpeting the ground with its glossy, green leaves. Many people pull down ivy mistakenly thinking it's a parasitic pest plant, but in fact it doesn't damage the plant it creeps over. Ivy offers vital protection for roosting birds and hibernating insects. Its bright autumn flowers provide valuable food for a host of insects and its berries are food for hungry birds.



Honeybee
Apis mellifera



Speckled Wood Butterfly
Pararge aegeria



Marmalade Hoverfly
Eristalis tenax



Lunar Underwing Moth
Ornitholscelis lunosa



Common Wasp
Vespa vulgaris



Buff-tailed Bumblebee
Bombus terrestris



Holly Blue Butterfly
Celastrina argiolus



Footballer Hoverfly
Helophilus pendulus



Common Green Bottle Fly
Lucilia sericata



Common Dronefly
Eristalis tenax



European Hornet
Vespa crabro



Red Admiral Butterfly
Vanessa atalanta



Comma Butterfly
Polygonia c-album



Tapered Dronefly
Eristalis tenax



Batman Hoverfly
Myathropa florea



Common Carder Bumblebee
Bombus pascuorum





















Let ivy flourish and watch it buzzing with insects in autumn!



MEET NATURE'S 'PEST' CONTROL EXPERTS

Many of our common insects love eating slugs, snails, aphids and caterpillars. Please care for these important creatures and try to avoid using garden pesticides which harm them.



<p>eats aphids</p>  <p>Green Lacewing <i>Chrysoperla comea</i> length 10-15mm</p>	<p>eats aphids</p>  <p>2-spot Ladybird <i>Adalia bipunctata</i> length 4-6mm</p>	<p>eats woodworm</p>  <p>Brown & Yellow Chequered Beetle <i>Dytiscus mollis</i> length 8-13mm</p>	<p>eats snails</p>  <p>Smooth Snail-hunter <i>Abiattaria laevigata</i> length 10-18mm</p>	<p>eats aphids and caterpillars</p>  <p>Common Wasp <i>Vespa vulgaris</i> (worker) length 10-13mm</p>
<p>eats aphids</p>  <p>14-spot Ladybird <i>Propylaea quatuordecimpunctata</i> length 3-6mm</p>	<p>eats slugs and snails</p>  <p>Snail Hunter <i>Cyclotus coraxoides</i> length 18-22mm</p>	<p>eats snails</p>  <p>Black Snail Beetle <i>Phaedusa atrata</i> length 10-15mm</p>	<p>eats slugs and spiders</p>  <p>Devil's Coach Horse <i>Cicopys albus</i> length 20-30mm</p>	<p>eats aphids</p>  <p>Cream-spot Ladybird <i>Coleus quatuordecimpunctata</i> length 4-7mm</p>
<p>eats slugs</p>  <p>Parallel Sided Ground Beetle <i>Abrus parallelus</i> length 17-22mm</p>	<p>eats slugs and caterpillars</p>  <p>Black Clock Beetle <i>Pterostichus modicus</i> length 15-20mm</p>	<p>eats caterpillars</p>  <p>Parasitic Wasp <i>Cotesia glomerata</i> length 5-7mm</p>	<p>eats caterpillars</p>  <p>Green Tiger Beetle <i>Cicindela campestris</i> length 10-15mm</p>	<p>eats aphids</p>  <p>Big-eyed Bronze Ground Beetle <i>Notophilus biguttatus</i> length 5-6mm</p>
<p>eats aphids</p>  <p>7-spot Ladybird <i>Coccinella septempunctata</i> length 5-8mm</p>	<p>eats slugs and snails</p>  <p>Claw Worm larvae <i>Lernaeus noctivaga</i> length 15-25mm</p>	<p>eats slugs and snails</p>  <p>Grassland Carrion Beetle <i>Sphaerium trisus</i> length 12-15mm</p>	<p>eats aphids, slugs and snails</p>  <p>Common Soldier Beetle <i>Rhagonycha fulva</i> length 8-10mm</p>	<p>eats slugs and snails</p>  <p>Violet Ground Beetle <i>Carabus violaceus</i> length 20-30mm</p>



LIVE
HERE
LOVE
HERE

keepnorthernirelandbeautiful.org

Illustrations by Marian Hill www.marianhill.co.uk



@marian.hill



@hill_marian in consultation with Mike Williams

MEET NATURE'S WASTE DISPOSAL EXPERTS

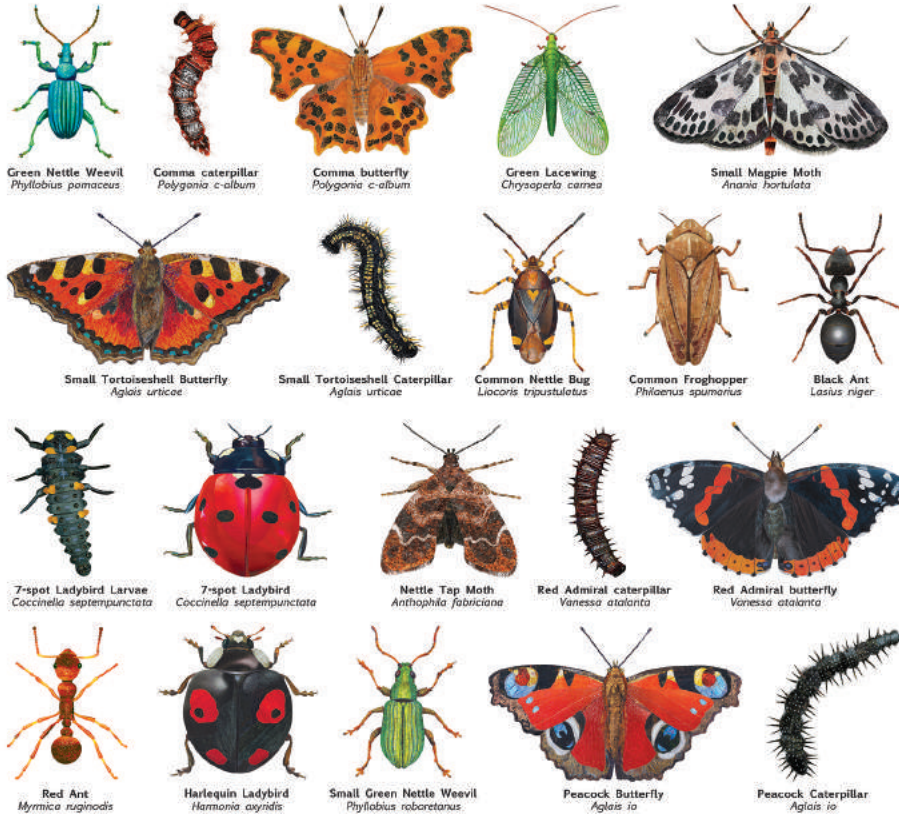
Do you know that an army of insects is busy cleaning and tidying; processing all kinds of waste, composting dead plants and fertilizing soil. The world would be in a real mess without them.

Please help nurture these vital creatures and avoid using chemical treatments which may harm them.



NETTLES

The Stinging Nettle may not be an eye catching plant but it's a home and vital source of food for many insects.



The new leaves of nettles are delicious when made into soup, and nettle tea has been used as a traditional cure for arthritis, back pain, eczema, asthma, hay fever and muscle pain for hundreds of years.

Why not help wildlife and nurture a patch of this very useful plant?



Meet the Pollinators

Look at all the different local insects which pollinate flowers!



Footballer Hoverfly
Helophilus pendulus
wing span 25mm



Orange-tip Butterfly (female)
Anthocharis cardamines
wing span 40-50mm



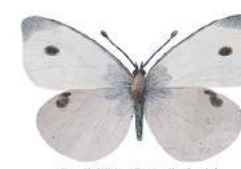
Rose Chafer Beetle
Cetonia aurata
length 14-21mm



Common Carder Bumblebee
Bombus pascuorum
length 8-18mm



Red Admiral Butterfly
Vanessa atalanta
wing span 67-72mm



Small White Butterfly
Pieris rapae
wing span 40-45mm



Painted Lady Butterfly
Vanessa cardui
wing span 51-73mm



Holly Blue Butterfly (male)
Polyommatus icarus
wing span 26-35mm



Common Drone-fly
Eristalis perrinox
wing length 10-12mm



Meadow Brown Butterfly
Maniola jurtina
wing span 50-55mm



Large White Butterfly (female)
Pieris brassicae
wing span 63-70mm



Silver-washed Fritillary Butterfly
Argynnis paphis
wing span 69-80mm



Pollen Beetle
Meigethes aeneus
length 2-3mm



Marmalade Hoverfly
Eristalis baltatus
wing length 6-10mm



Orange-tip Butterfly (male)
Anthocharis cardamines
wing span 40-50mm



Red-tailed Bumblebee (male)
Bombus lapidarius
length 13-15mm



Herald Moth
Scoliopteryx ibatrix
wing span 40-45mm



Batman Hoverfly
Myathropa florea
length 7-12mm



Ringlet Butterfly
Aphantopus hyperantus
wing span 35-42mm



Black & Yellow Longhorn Beetle
Ruspea maculata
length 13-20mm



Marsh Fritillary Butterfly
Euphydryas aurina
wing span 30-42mm



Honeybee (worker)
Apis mellifera
length 12-14mm



6-Spot Burnet Moth
Zygena filiperdulae
wing span 25-40mm



Common Banded Hoverfly
Syrphus ribesii
length 8-13mm



Speckled Wood Butterfly
Pararge aegeria
wing span 47-50mm



Tawny Mining Bee
Andrena fulva
length 9-15mm



Garden Chafer Beetle
Phyllopertha horticola
length 8-11mm



Small White Butterfly (female)
Pieris rapae
wing span 40-45mm



Magpie Moth
Abraxas grossularata
wing span 35-40mm



Red Soldier Beetle
Rhagonycha fulva
length 7-10mm



Small Copper Butterfly
Lycaena phlaeas
wing span 32-35mm



Green Malachite Beetle
Malachius bipustulatus
length 5-6mm



Common Wasp (worker)
Vespa vulgaris
length 10-13mm



Red Ant
Myrmica ruginodis
length 4-6mm



Small Tortoiseshell Butterfly
Aglais urticae
wing span 50-56mm



Early Bumblebee (female)
Bombus pratorum
length 8-17mm



Peacock Butterfly
Aglais io
wing span 50-56mm



Buff-tailed Bumblebee (worker)
Bombus terrestris
length 10-25mm



Brimstone Butterfly
Gonepteryx rhamni
wing span 55-60mm



Tapered Hoverfly
Eristalis perrinox
wing length 6-13mm



Large White Butterfly (male)
Pieris brassicae
wing span 63-70mm



Red Mason Bee
Osmia bicornis
length 6-12mm



Comma Butterfly
Polyommatus c-album
wing span 50-60mm

Beetles & Bugs of Northern Ireland

How many species can you spot?

