

# Meet the Pollinators

Look at all the different local insects which pollinate flowers!



**Footballer Hoverfly**  
*Helophilus pendulus*  
wing span 25mm



**Orange-tip Butterfly (female)**  
*Anthocharis cardamines*  
wing span 40-50mm



**Rose Chafer Beetle**  
*Cetonia aurata*  
length 14-21mm



**Common Carder Bumblebee**  
*Bombus pascuorum*  
length 8-18mm



**Red Admiral Butterfly**  
*Vanessa atalanta*  
wing span 67-72mm



**Small White Butterfly (male)**  
*Pieris rapae*  
wing span 40-45mm



**Painted Lady Butterfly**  
*Vanessa cardui*  
wing span 51-73mm



**Holly Blue Butterfly (male)**  
*Polyommatus icarus*  
wing span 26-35mm



**Common Drone-fly**  
*Eristalis pertinax*  
wing length 10-12mm



**Meadow Brown Butterfly**  
*Maniola jurtina*  
wing span 50-55mm



**Large White Butterfly (female)**  
*Pieris brassicae*  
wing span 63-70mm



**Silver-washed Fritillary Butterfly**  
*Argynnis paphia*  
wing span 69-80mm



**Pollen Beetle**  
*Meligethes aeneus*  
length 2-3mm



**Marmalade Hoverfly**  
*Episyrphus balteatus*  
wing length 6-10mm



**Orange-tip Butterfly (male)**  
*Anthocharis cardamines*  
wing span 40-50mm



**Red-tailed Bumblebee (male)**  
*Bombus lapidarius*  
length 13-15mm



**Herald Moth**  
*Scoliopteryx libatrix*  
wing span 40-45mm



**Batman Hoverfly**  
*Myathropa florea*  
length 7-12mm



**Ringlet Butterfly**  
*Aphantopus hyperantus*  
wing span 35-42mm



**Black & Yellow Longhorn Beetle**  
*Rutpela maculata*  
length 13-20mm



**Marsh Fritillary Butterfly**  
*Euphydryas aurinia*  
wing span 30-42mm



**Honeybee (worker)**  
*Apis mellifera*  
length 12-14mm



**6-Spot Burnet Moth**  
*Zygaena filipendulae*  
wing span 25-40mm



**Common Banded Hoverfly**  
*Syrphus ribesii*  
length 8-13mm



**Speckled Wood Butterfly**  
*Pararge aegeria*  
wing span 47-50mm



**Tawny Mining Bee**  
*Andrena fulva*  
length 9-15mm



**Garden Chafer Beetle**  
*Phyllotreta horticola*  
length 8-11mm



**Small White Butterfly (female)**  
*Pieris rapae*  
wing span 40-45mm



**Magpie Moth**  
*Abraxas grossulariana*  
wing span 35-40mm



**Red Soldier Beetle**  
*Rhagonycha fulva*  
length 7-10mm



**Small Copper Butterfly**  
*Lycaena phlaeas*  
wing span 32-35mm



**Green Malachite Beetle**  
*Malachius bipustulatus*  
length 5-6mm



**Common Wasp (worker)**  
*Vespa vulgaris*  
length 10-13mm



**Red Ant**  
*Myrmica ruginodis*  
length 4-6mm



**Small Tortoiseshell Butterfly**  
*Aglais urticae*  
wing span 50-56mm



**Early Bumblebee (female)**  
*Bombus pratorum*  
length 8-17mm



**Peacock Butterfly**  
*Aglais io*  
wing span 50-56mm



**Buff-tailed Bumblebee (worker)**  
*Bombus terrestris*  
length 10-25mm



**Brimstone Butterfly**  
*Gonepteryx rhamni*  
wing span 55-60mm



**Tapered Hoverfly**  
*Eristalis pertinax*  
wing length 8-13mm



**Large White Butterfly (male)**  
*Pieris brassicae*  
wing span 63-70mm



**Red Mason Bee**  
*Osmia bicornis*  
length 6-12mm



**Comma Butterfly**  
*Polyommatus c-album*  
wing span 50-60mm





# Beetles & Bugs of Northern Ireland

How many species can you spot?



**Parallel Sided Ground Beetle**  
*Abax parallelepipedus*  
length 17-22mm



**7-spot Ladybird**  
*Coccinella septempunctata*  
length 5-8mm



**Common Malachite Beetle**  
*Malachius bipustulatus*  
length 5-6mm



**Devil's Coach Horse**  
*Ocyus olens*  
length 20-30mm



**Dung Beetle**  
*Melinopterus prodromus*  
length 5-7mm



**Snail Hunter**  
*Cychnus caraboides*  
length 18-22mm



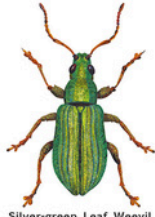
**Eyed Ladybird**  
*Anatis ocellata*  
length 7-9mm



**Black Sexton Beetle**  
*Nicrophorus humator*  
length 18-26mm



**Darkling Beetle**  
*Lagria hirta*  
length 7-8mm



**Silver-green Leaf Weevil**  
*Phyllotribus argentatus*  
length 4-6mm



**Rhinoceros Beetle**  
*Sinodendron cylindricum*  
length 15-18mm



**Common Soldier Beetle**  
*Rhagonycha fulva*  
length 8-10mm



**Red-legged Shieldbug**  
*Pentatoma rufipes*  
length 11-14mm



**Night-flying Dung Beetle**  
*Acrossus rufipes*  
length 9-15mm



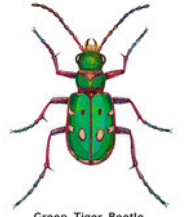
**14-spot Ladybird**  
*Propylea quatuordecimpunctata*  
length 4-5mm



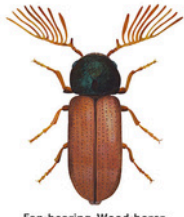
**Big-eyed Bronze Ground Beetle**  
*Notiophilus biguttatus*  
length 5-6mm



**May Bug**  
*Melolontha melolontha*  
length 25-30mm



**Green Tiger Beetle**  
*Cicindela campestris*  
length 12-15mm



**Fan-bearing Wood-borer**  
*Ptilinus pectinicornis*  
length 3-6mm



**22-spot Ladybird**  
*Psylliobora vigintiduopunctata*  
length 3-4mm



**Green Shieldbug**  
*Palomena prasina*  
length 12-14mm



**Garden Chafer Beetle**  
*Phyllotreta horticola*  
length 7-11mm



**Scarlet Lily Beetle**  
*Liloceris lili*  
length 6-9mm



**Green Dock Beetle**  
*Gastrophysa viridula*  
length 4-7mm



**Dor Dung Beetle**  
*Geotrupes stercorarius*  
length 16-26mm



**Harlequin Ladybird**  
*Harmonia axyridis*  
length 6-9mm



**Grassland Carrion Beetle**  
*Silpha tristis*  
length 12-15mm



**Minotaur Beetle**  
*Typhaeus typhoeus*  
length 15-20mm



**Click Beetle**  
*Athous haemorrhoidalis*  
length 10-15mm



**2-spot Ladybird**  
*Adalia bipunctata*  
length 4-6mm



**Meadow Froghopper**  
*Philaenus spumarius*  
length 5-7mm



**Striped Ladybird**  
*Myia oblongoguttata*  
length 6-8mm



**Green Nettle Weevil**  
*Phyllotribus pomaceus*  
length 7-9mm



**Pine Ladybird**  
*Exochomus quadripustulatus*  
length 3-5mm



**Black Snail Beetle**  
*Phasphuga atrata*  
length 10-15mm



**Rose Chafer Beetle**  
*Cetonia aurata*  
length 18-25mm



**Banded Burying Beetle**  
*Nicrophorus investigator*  
length 8-12mm



**Green Tortoise Beetle**  
*Cassida viridis*  
length 8-10mm



**Orange Ladybird**  
*Halysia sedecimpunctata*  
length 5-8mm



**Rosemary Beetle**  
*Chrysolina americana*  
length 5-8mm



**Common Nettle Bug**  
*Liochris tripustulatus*  
length 4-5mm



**Bank's Leaf Beetle**  
*Chrysolina banksii*  
length 6-12mm



**Hairy Shieldbug**  
*Dolycoris baccarum*  
length 10-12mm



**Cream Spot Ladybird**  
*Cavia quatuordecimpunctata*  
length 4-5mm



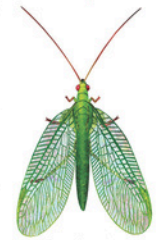



















**Black Clock Beetle**  
*Pterostichus madidus*  
length 15-20mm



# MEET NATURE'S 'PEST' CONTROL EXPERTS

Many of our common insects love eating slugs, snails, aphids and caterpillars. Please care for these important creatures and try to avoid using garden pesticides which harm them.



<p>eats aphids</p>  <p><b>Green Lacewing</b> <i>Chrysoperla cometa</i> length 10-15mm</p>	<p>eats aphids</p>  <p><b>2-spot Ladybird</b> <i>Adalia bipunctata</i> length 4-6mm</p>	<p>eats woodworm</p>  <p><b>Brown &amp; Yellow Chequered Beetle</b> <i>Cypsis mollis</i> length 8-13mm</p>	<p>eats snails</p>  <p><b>Smooth Snail-hunter</b> <i>Ablattaria laevigata</i> length 10-18mm</p>	<p>eats aphids and caterpillars</p>  <p><b>Common Wasp</b> <i>Vespaula vulgaris (worker)</i> length 10-13mm</p>
<p>eats aphids</p>  <p><b>14-spot Ladybird</b> <i>Propylea quatuordecimpunctata</i> length 3-6mm</p>	<p>eats slugs and snails</p>  <p><b>Snail Hunter</b> <i>Cychus coraboides</i> length 18-22mm</p>	<p>eats snails</p>  <p><b>Black Snail Beetle</b> <i>Phosphuga atrata</i> length 10-15mm</p>	<p>eats slugs and spiders</p>  <p><b>Devil's Coach Horse</b> <i>Ocyrops alens</i> length 20-30mm</p>	<p>eats aphids</p>  <p><b>Cream-spot Ladybird</b> <i>Calvia quatuordecimguttata</i> length 4-7mm</p>
<p>eats slugs</p>  <p><b>Parallel Sided Ground Beetle</b> <i>Abox parallelipipedus</i> length 17-22mm</p>	<p>eats slugs and caterpillars</p>  <p><b>Black Clock Beetle</b> <i>Pterostichus modicus</i> length 15-20mm</p>	<p>eats caterpillars</p>  <p><b>Parasitic Wasp</b> <i>Cotesia glomerata</i> length 5-7mm</p>	<p>eats caterpillars</p>  <p><b>Green Tiger Beetle</b> <i>Cicindela campestris</i> length 10-15mm</p>	<p>eats aphids</p>  <p><b>Big-eyed Bronze Ground Beetle</b> <i>Notophilus biguttatus</i> length 5-6mm</p>
<p>eats aphids</p>  <p><b>7-spot Ladybird</b> <i>Coccinella septempunctata</i> length 5-8mm</p>	<p>eats slugs and snails</p>  <p><b>Glow Worm larvae</b> <i>Lampyrus noctiluca</i> length 15-25mm</p>	<p>eats slugs and snails</p>  <p><b>Grassland Carrion Beetle</b> <i>Silpha tristis</i> length 12-15mm</p>	<p>eats aphids, slugs and snails</p>  <p><b>Common Soldier Beetle</b> <i>Rhagonycha fulva</i> length 8-10mm</p>	<p>eats slugs and snails</p>  <p><b>Violet Ground Beetle</b> <i>Carabus violaceus</i> length 20-30mm</p>



LIVE  
HERE  
LOVE  
HERE

[keepnorthernirelandbeautiful.org](http://keepnorthernirelandbeautiful.org)

Illustrations by Marian Hill [www.marianhill.co.uk](http://www.marianhill.co.uk)  @marian.hill  @hill\_marian in consultation with Mike Williams



# MEET NATURE'S WASTE DISPOSAL EXPERTS

Do you know that an army of insects is busy cleaning and tidying; processing all kinds of waste, composting dead plants and fertizing soil. The world would be in a real mess without them.

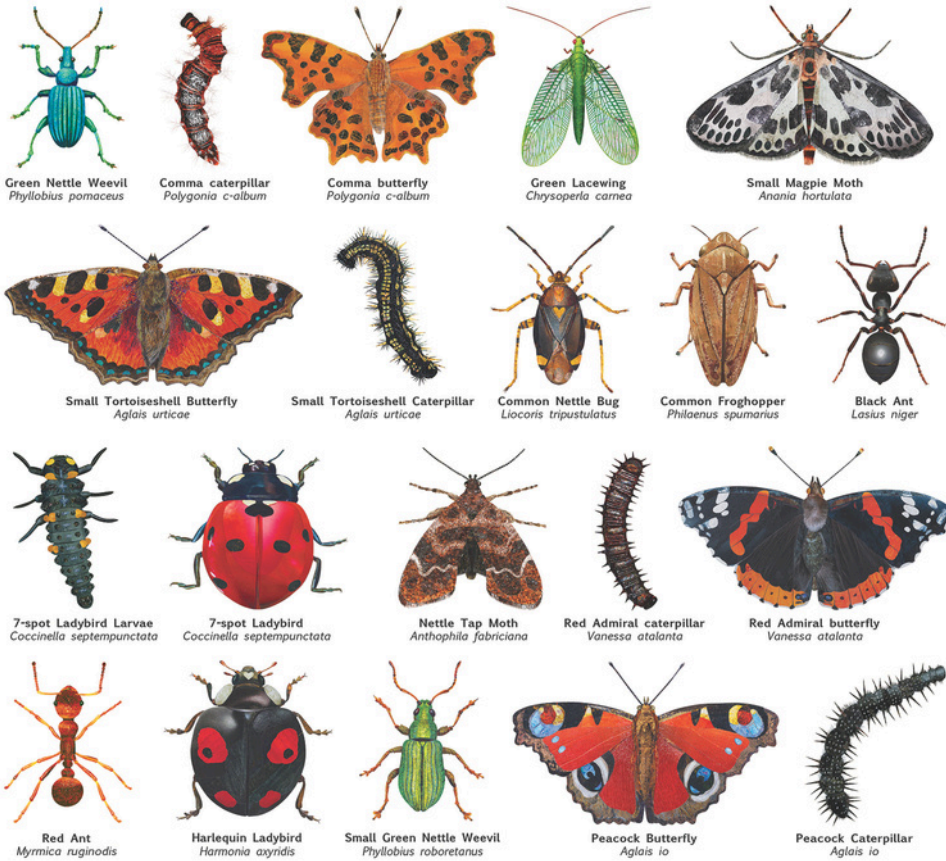
Please help nurture these vital creatures and avoid using chemical treatments which may harm them.





# NETTLES

The Stinging Nettle may not be an eye catching plant but it's a home and vital source of food for many insects.



The new leaves of nettles are delicious when made into soup, and nettle tea has been used as a traditional cure for arthritis, back pain, eczema, asthma, hay fever and muscle pain for hundreds of years.

Why not help wildlife and nurture a patch of this very useful plant?





# DANDELIONS

The nectar and pollen of these cheerful native wildflowers are a vital food in early Spring for many insects.



Honeybee (worker)  
*Apis mellifera*



Buff-tailed Bumblebee (worker)  
*Bombus terrestris*



Common Twist-tail  
*Sphaerophoria scripta*



Peacock Butterfly  
*Aglais io*



Red-tailed Bumblebee (female)  
*Bombus lapidarius*



Orange-tip Butterfly (male)  
*Anthocharis cardamines*



Red Mason Bee  
*Osmia bicornis*



Marmalade Hoverfly  
*Episyrphus balteatus*



Footballer Hoverfly  
*Helophilus pendulus*



Common Banded Hoverfly  
*Syrphus ribesii*



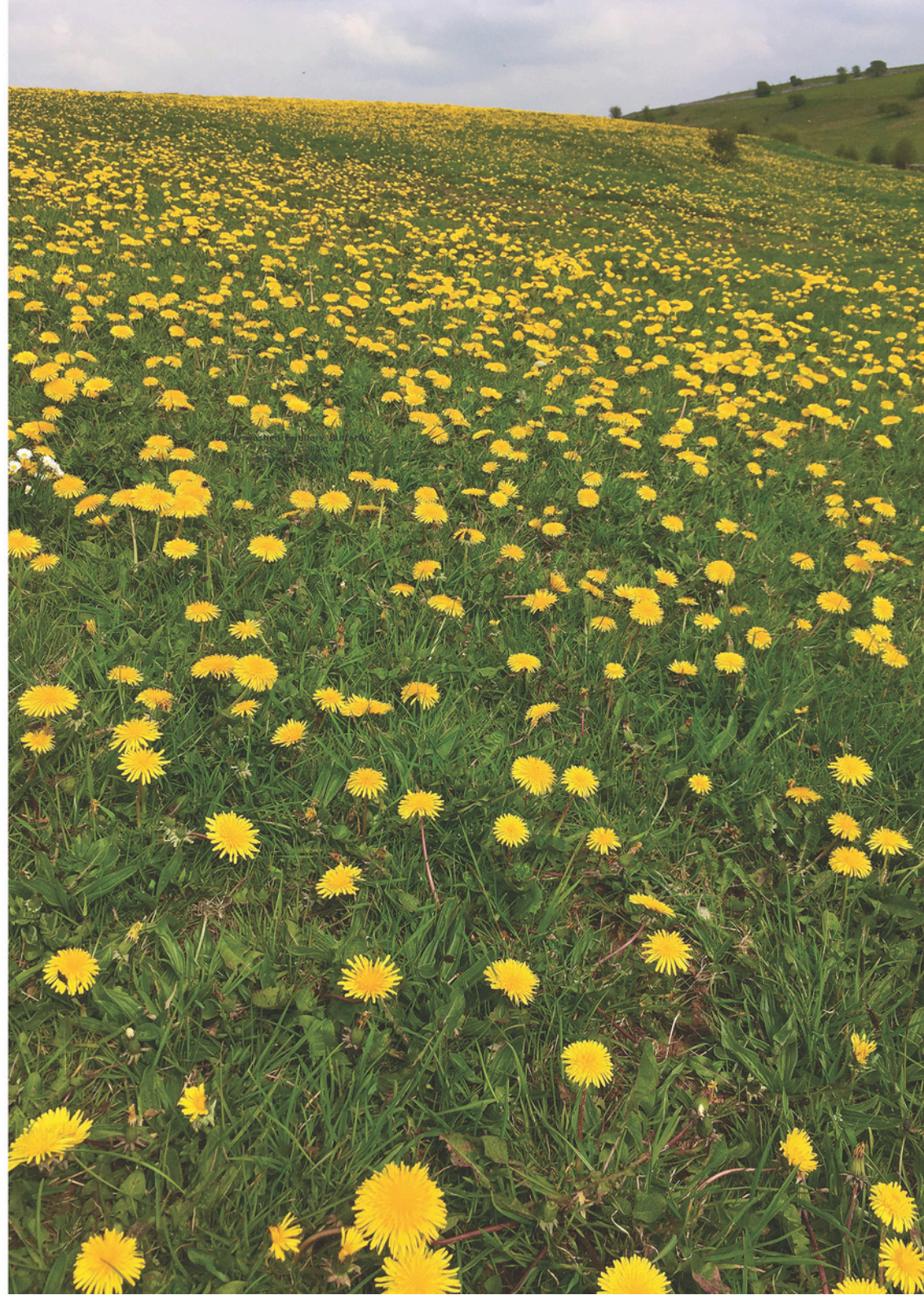
Small Tortoiseshell Butterfly  
*Aglais urticae*



Early Bumblebee (female)  
*Bombus pratorum*

Dandelions help to fertilise top-soil. Their deep roots bring nutrients to the surface, which helps shallow-rooted plants to thrive.

Dandelion leaves are delicious when added to salads and are stuffed full of iron, calcium and potassium. They contain more vitamin C than a tomato and more vitamin A than spinach.





# IVY

We are used to seeing ivy climbing up old walls, tree trunks and carpeting the ground with its glossy, green leaves. Many people pull down ivy mistakenly thinking it's a parasitic pest plant, but in fact it doesn't damage the plant it creeps over. Ivy offers vital protection for roosting birds and hibernating insects. Its bright autumn flowers provide valuable food for a host of insects and its berries are food for hungry birds.



Honeybee  
*Apis mellifera*



Speckled Wood Butterfly  
*Pararge aegeria*



Marmalade Hoverfly  
*Epsirrhphus balteatus*



Lunar Underwing Moth  
*Omphaloscelis lunosa*



Common Wasp  
*Vespa vulgaris*



Buff-tailed Bumblebee  
*Bombus terrestris*



Holly Blue Butterfly  
*Celastrina argiolus*



Footballer Hoverfly  
*Helophilus pendulus*



Common Green Bottle Fly  
*Lucilia sericata*



Common Dronefly  
*Eristalis tenax*



European Hornet  
*Vespa crabro*



Red Admiral Butterfly  
*Vanessa atalanta*



Comma Butterfly  
*Polygonia c-album*



Tapered Dronefly  
*Eristalis pertinax*



Batman Hoverfly  
*Myathropa florea*



Common Carder Bumblebee  
*Bombus pascuorum*

Let ivy flourish and watch it buzzing with insects in autumn!





# BRAMBLES

The blackberry fruits of the bramble bush are loved by humans but also relished by many wild creatures. This plant's prickly stems give valuable protection for nesting birds and its flowers are food for many insects.



Green Shieldbug  
*Palomena prasina*



Large White Butterfly (female)  
*Pieris brassicae*



Marmalade Hoverfly  
*Epsirphus balteatus*



Comma Butterfly  
*Polygonia c-album*



Red Admiral Butterfly  
*Vanessa atalanta*



Buff-tailed Bumblebee  
*Bombus terrestris*



6-spot Burnet Moth  
*Zygaena filipendulae*



Meadow Brown Butterfly  
*Maniola jurtina*



Common Carder Bumblebee  
*Bombus pascuorum*



Holly Blue Butterfly  
*Celastrina argiolus*



Hairy Shieldbug  
*Dolycoris baccarum*



Small Tortoiseshell Butterfly  
*Aglais urticae*



Ringlet Butterfly  
*Aphantopus hyperantus*



Footballer Hoverfly  
*Helophilus pendulus*



Painted Lady Butterfly  
*Vanessa cardui*



Honeybee  
*Apis mellifera*

Next time you pass a bramble bush in flower, take a moment to notice how many insects are busily buzzing around it.

